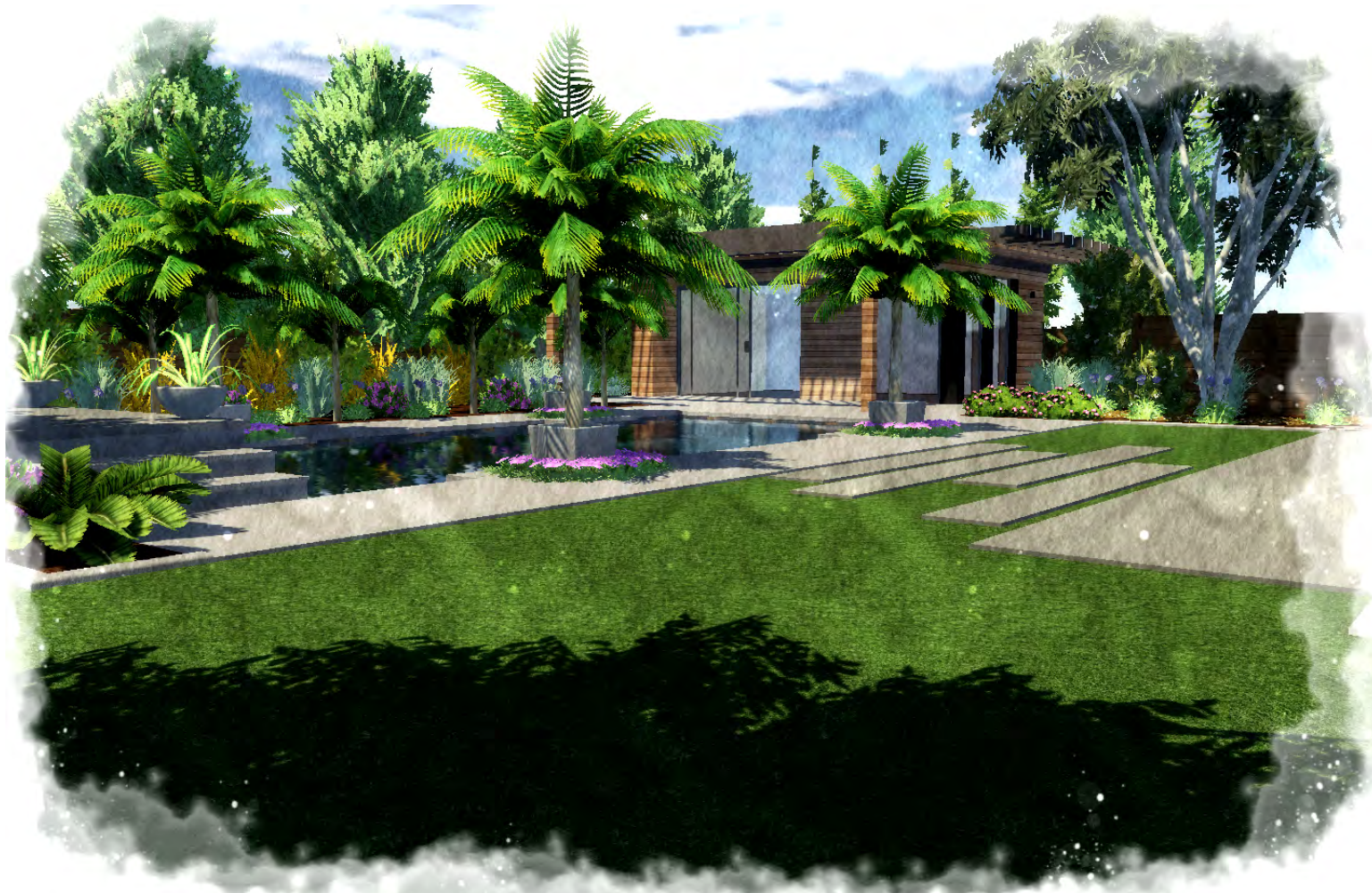
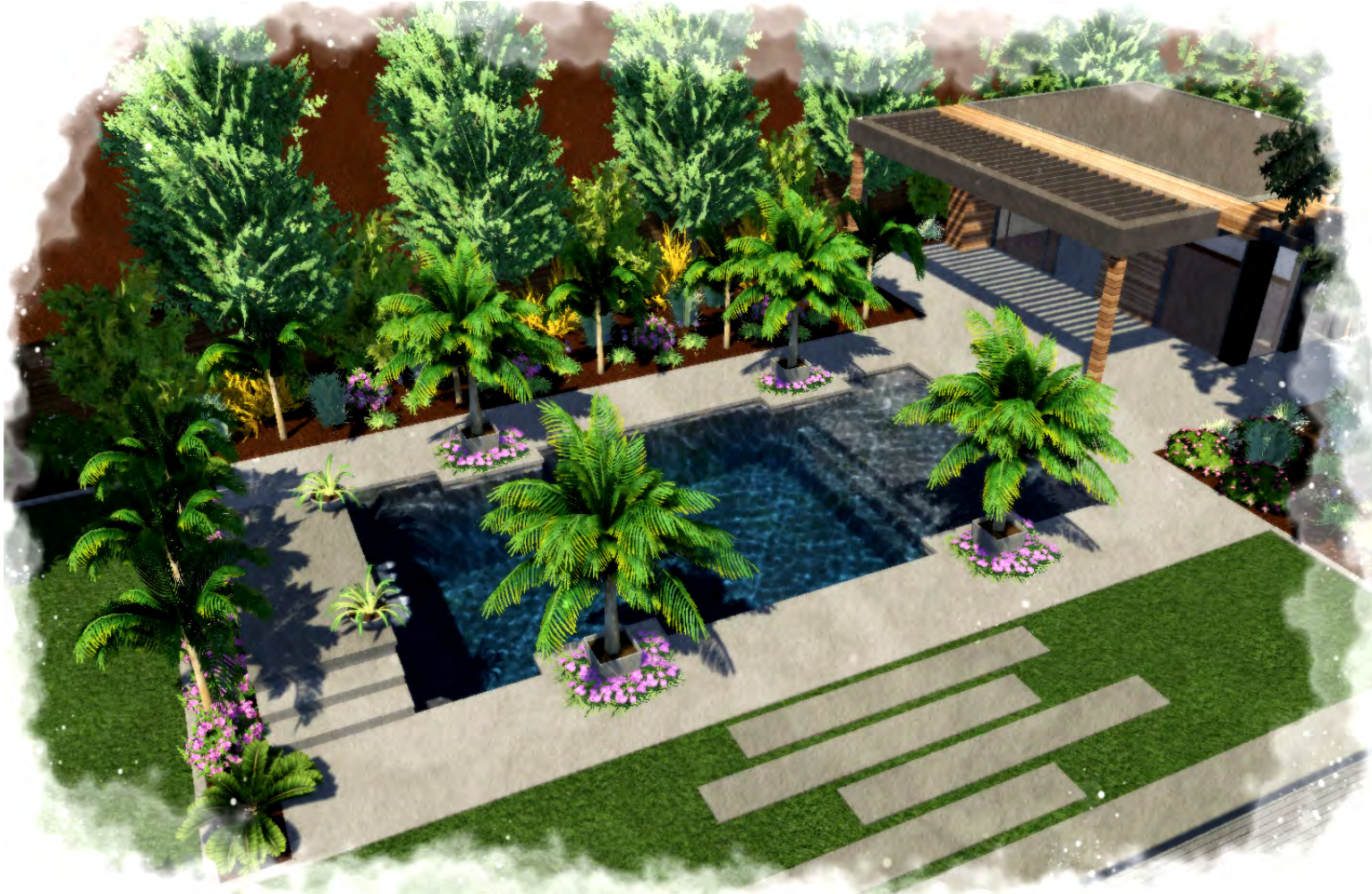
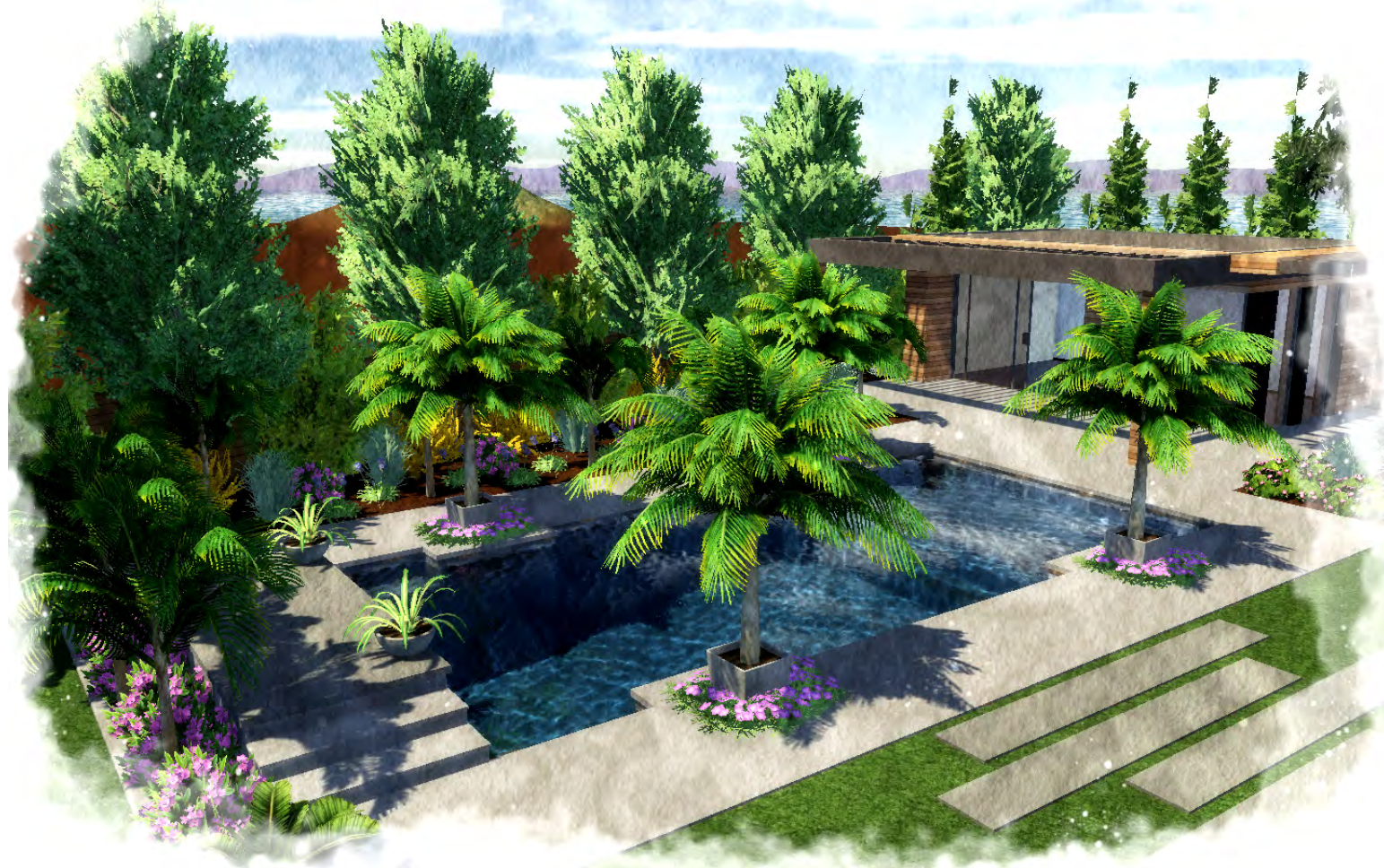


POOL RENDERINGS
ADDRESS:
APN #
GATE CODE: N/A
DETAIL DRAWINGS
PG 3 OF 3
SCALE: 1/8' = 1'
SCOPE OF WORK

- 1) NEW POOL CONSTRUCTION
- 2) LANDSCAPE



Majestic Builders Inc
LICENSE # 581822
(916) 257-5224
11241 Coloma Rd
Suite D
Gold River, CA 95670

| | | | | |
|---|--|--|-------|-----------|
| ALL CONSTRUCTION TO CONFORM TO CBC | | ARTICLE 2.5. THE SWIMMING POOL SAFETY ACT [115920 - 115929] | NOTES | REVISIONS |
| UNIFORM SWIMMING POOL, SPA AND HOT TUB CODE, 2019 EDITION 2019 CALIFORNIA RESIDENTIAL CODE 2019 CALIFORNIA PLUMBING CODE 2019 CALIFORNIA MECHANICAL CODE 2019 CALIFORNIA ELECTRICAL CODE 2019 CALIFORNIA FIRE CODE 2019 CALIFORNIA ENERGY CODE | | AN ENCLOSURE SHALL HAVE ALL OF THE FOLLOWING CHARACTERISTICS: (A) ANY ACCESS GATES THROUGH THE ENCLOSURE OPEN AWAY FROM THE SWIMMING POOL, AND ARE SELF-CLOSING WITH A SELF-LATCHING DEVICE PLACED NO LOWER THAN 60 INCHES ABOVE THE GROUND. (B) A MINIMUM HEIGHT OF 60 INCHES. (C) A MAXIMUM VERTICAL CLEARANCE FROM THE GROUND TO THE BOTTOM OF THE ENCLOSURE OF TWO INCHES. (D) GAPS OR VOIDS, IF ANY, DO NOT ALLOW PASSAGE OF A SPHERE EQUAL TO OR GREATER THAN FOUR INCHES IN DIAMETER. (E) AN OUTSIDE SURFACE FREE OF PROTRUSIONS, CAVITIES, OR OTHER PHYSICAL CHARACTERISTICS THAT WOULD SERVE AS HANDHOLDS OR FOOTHOLDS THAT COULD ENABLE A CHILD BELOW THE AGE OF FIVE YEARS TO CLIMB OVER. (F) EXIT ALARMS ON THE PRIVATE SINGLE-FAMILY HOME'S DOORS THAT PROVIDE DIRECT ACCESS TO THE SWIMMING POOL OR SPA. THE EXIT ALARM MAY CAUSE EITHER AN ALARM NOISE OR A VERBAL WARNING, SUCH AS A REPEATING NOTIFICATION THAT "THE DOOR TO THE POOL IS OPEN." | | |
| EQUIPOTENTIAL BONDING GRID 1) PERIMETER SURFACE SHALL EXTEND (6FT) HORIZONTALLY BEYOND THE INSIDE WALLS OF THE POOL AND SHALL INCLUDE UNPAVED SURFACE AS WELL AS POURED CONCRETE AND OTHER TYPES OF PAVING 2) REINFORCING STEEL AND COPPER CONDUCTOR GRIDS (#8 MINIMUM) ARE TO BE ATTACHED TO THE POOL STRUCTURE AT A MINIMUM OF (4) POINTS UNIFORMLY SPACED AROUND THE PERIMETER OF THE POOL | | | | |